



Parts List

Model
7800336

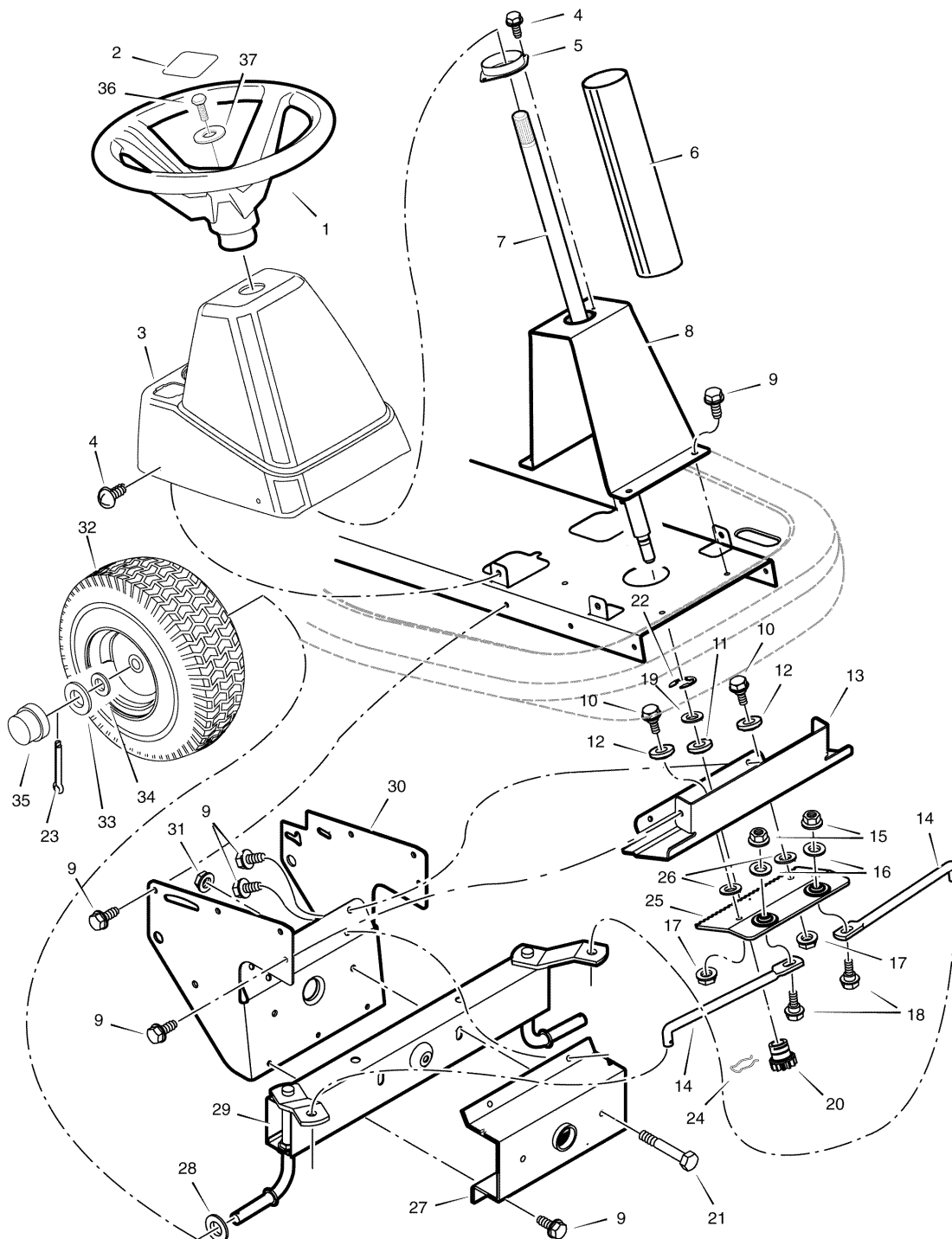


1741752
Revision 00
Rev. Date 05/2008
TP 400-4924-00-LT-R

PRODUCT COMPONENTS	PAGES
Steering	4
Motion Drive	6
Electrical System	10
Chassis & Hood	12
Decals	16
Mower Housing	18
Mower Housing Suspension	22
Torque Specification Chart	Inside Back Cover

Steering

NOTE: Unless noted otherwise,
use the standard hardware torque
specification chart.



The above parts group applies to the following Mfg. Nos.:
7800336 - 309007x51A

Steering

REF NO	PART NO.	DESCRIPTION
1	095336MA	WHEEL, Steering
2	711326MA	INSERT, Steering
3	1401044MA	CONSOLE, Low (Black)
4	26x250MA	SCREW
5	1401090MA	BEARING, Upper Steering
6	1401107MA	TUBE, Steering
7	1401100MA	SHAFT, Steering
8	1401055E701MA	SUPPORT, Steering
9	26x249MA	SCREW
10	009x67MA	BOLT, Shoulder
11	1401098MA	BEARING, Lower Steering
12	1401102MA	ROLLER
13	1401058E701MA	PLATE, Gear Mounting
14	1401123E701MA	LINK, Drag
15	015x84MA	NUT, Flange
16	710083MA	WASHER
17	015x88MA	NUT, Flange
18	01x111MA	BOLT, Hex
19	17x118ZMA	WASHER
20	1401099MA	GEAR, Pinion
21	01x146MA	BOLT, Hex
22	011x23MA	E-RING, Retainer
23	030x35MA	PIN, Cotter
24	094131MA	RETAINER, Spring
25	1401046E701MA	RACK, Steering
26	17x201MA	WASHER
27	1401376E701MA	BRACKET, Axle Front
28	17x157MA	WASHER
29	1401250E701MA	AXLE & SPINDLE ASSEMBLY
30	1401059E701MA	BRACKET, Support
31	15x118MA	NUT, Flange
32	1401381601MA	WHEEL, Front
33	17x197MA	WASHER
34	17x157MA	WASHER
35	094618MA	CAP, Hub
36	0025x3MA	Screw, Hex
37	17x146MA	WASHER

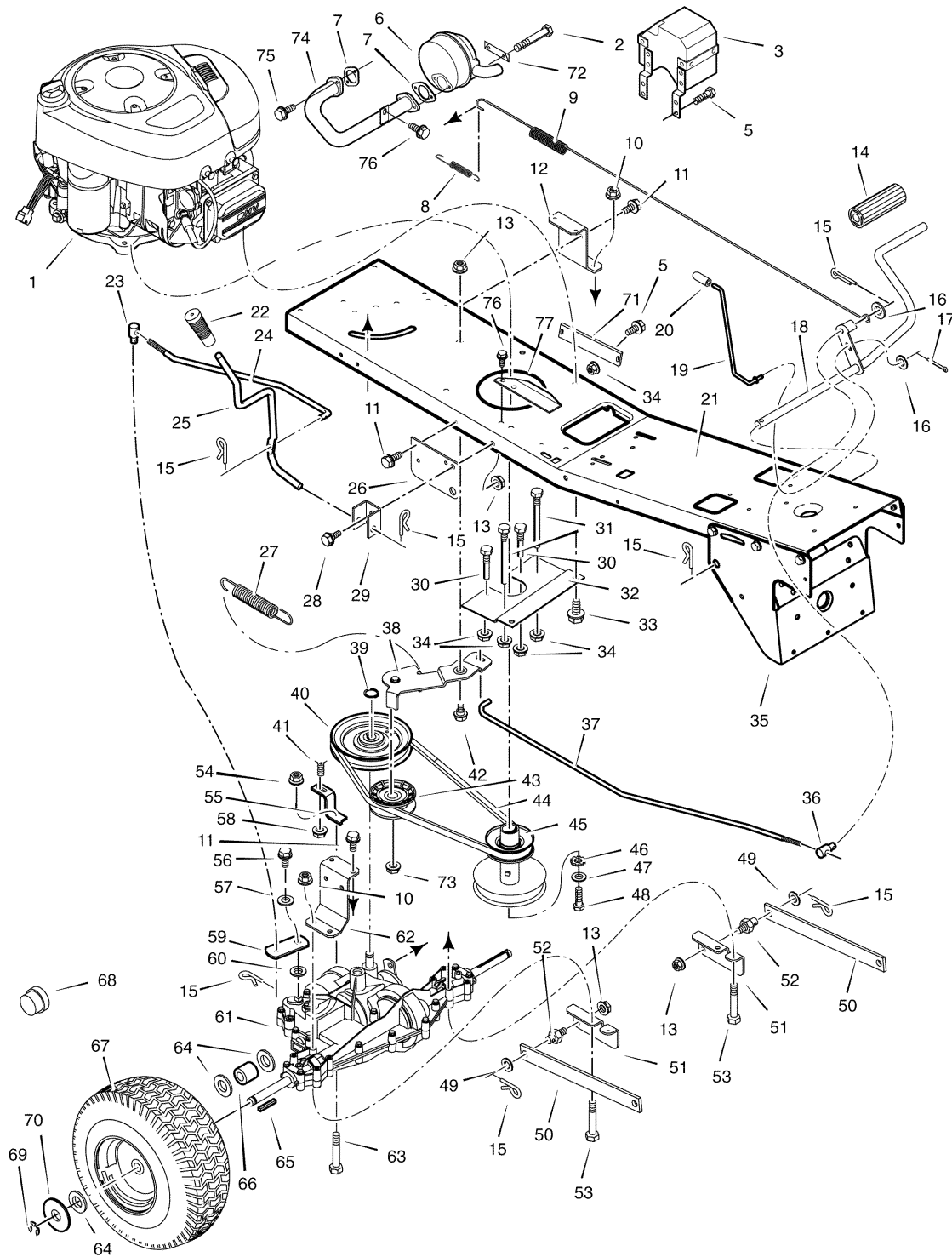
Footnotes

The above parts group applies to the following Mfg. Nos.:

7800336 - 309007x51A

Motion Drive

NOTE: Unless noted otherwise,
use the standard hardware torque
specification chart.



The above parts group applies to the following Mfg. Nos.:
7800336 - 309007x51A

Motion Drive

REF NO	PART NO.	DESCRIPTION
1	----	Engine, Briggs & Stratton * (Model 2158070331E1)
2	01x134MA	BOLT, Hex
3	1401375MA	SHIELD ASSEMBLY, Heat
5	26x267MA	SCREW
6	1401358MA	MUFFLER
7	692236	GASKET, Muffler
8	165x75MA	SPRING, Extension
9	165x148MA	SPRING, Extension
10	015x88MA	NUT
11	26x249MA	SCREW
12	1401268E701MA	BRACKET, Left Transaxle
13	015x84MA	NUT, Flange
14	021544MA	COVER, Pedal
15	030x20MA	PIN, Cotter
16	017x53MA	WASHER
17	0031x4MA	PIN, Cotter
18	1401127E701MA	PEDAL ASSEMBLY
19	1401112MA	ROD, Parking Brake
20	091079MA	GRIP, Parking Brake Rod
21	1401371E701MA	FRAME
22	1741756MA	GRIP, Shift Lever
23	1401148ZMA	NUT, Adjusting
24	1401122MA	LINK, Shift
25	1401111MA	LEVER, Shift
26	1401032E701MA	BRACKET, Lift Pivot
27	165x147MA	SPRING, Extension
28	009x39MA	BOLT, Shoulder
29	1401043E701MA	BRACKET, Pivot
30	1401104MA	GUIDE, Belt Short
31	1401105MA	GUIDE, Belt Long
32	1401057E701MA	PLATE, Belt Guide
33	0025x7MA	BOLT
34	015x79MA	NUT, Flange
35	1401059E701MA	BRACKET, Support
36	094815ZMA	NUT, Adjusting
37	1401078MA	ROD, Clutch
38	1401128E701MA	CLUTCH ARM ASSEMBLY
39	0011x7MA	RING, Retainer
40	1401077MA	PULLEY, Drive
41	002x53MA	BOLT, Carriage
42	009x39MA	BOLT, Shoulder
43	1401252MA	PULLEY, Idler
44	37x110MA	BELT, Motion Drive

Footnotes

Note* See your local Briggs & Stratton distributor for parts and service.

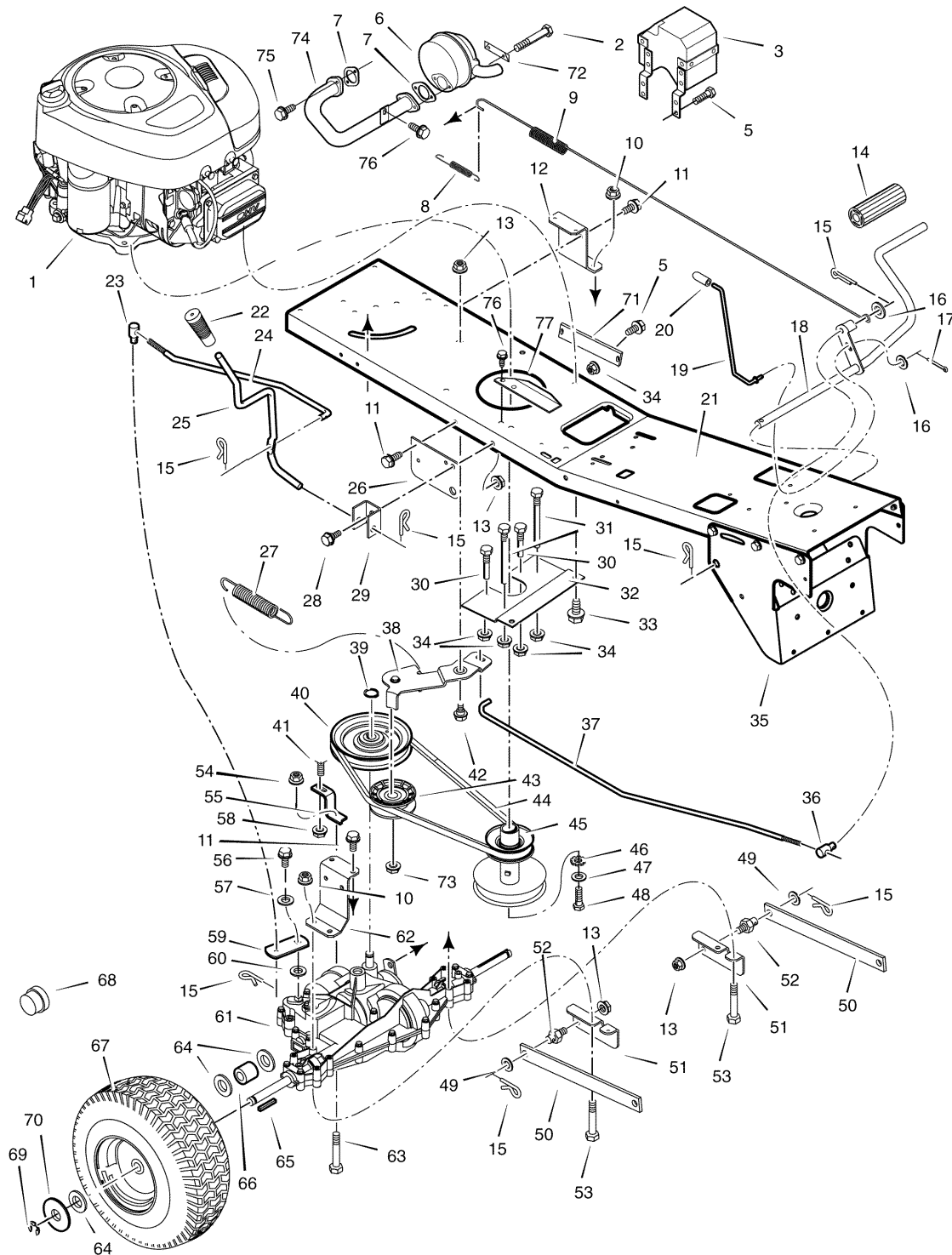
Note** Contact your nearest Peerless transaxle dealer for parts and service.

The above parts group applies to the following Mfg. Nos.:

7800336 - 309007x51A

Motion Drive

NOTE: Unless noted otherwise,
use the standard hardware torque
specification chart.



The above parts group applies to the following Mfg. Nos.:
7800336 - 309007x51A

Motion Drive

REF NO	PART NO.	DESCRIPTION
45	1401066MA	PULLEY, Split Stack
46	019x35MA	WASHER, Star
47	17x170MA	WASHER
48	01x140MA	BOLT, Hex
49	17x120MA	WASHER
50	1401031E701MA	ARM, Rear
51	1401039E701MA	BRACKET, Rear Hanger
52	094067MA	PIN, Threaded Shoulder
53	01x155MA	BOLT, Hex
54	015x88MA	NUT
55	1401051E701MA	BRACKET, Torque Reactor
56	06x105MA	SCREW
57	017x38MA	WASHER, Shift Yoke
58	015x43MA	NUT
59	1401351ZMA	YOKE, Shift
60	17x148MA	WASHER
61	-----	Transaxle, Peerless **
62	1401042E701MA	BRACKET, Right Transaxle
63	01x120MA	BOLT, Hex
64	17x160MA	WASHER
65	056534MA	KEY, Square
66	1401103MA	SPACER, Rear Wheel
67	1401120MA	WHEEL, Rear, 15"
68	094618MA	CAP, Hub
69	0011x3MA	E-RING
70	17x195MA	WASHER
71	1401260E701MA	PLATE, Reinforcement
72	092378MA	SCREW, Lock
73	015x98MA	NUT
74	1401357MA	TUBE, Exhaust
75	06x103MA	SCREW
76	26x263MA	SCREW
77	1401396MA	SHIELD, Heat

Footnotes

Note* See your local Briggs & Stratton distributor for parts and service.

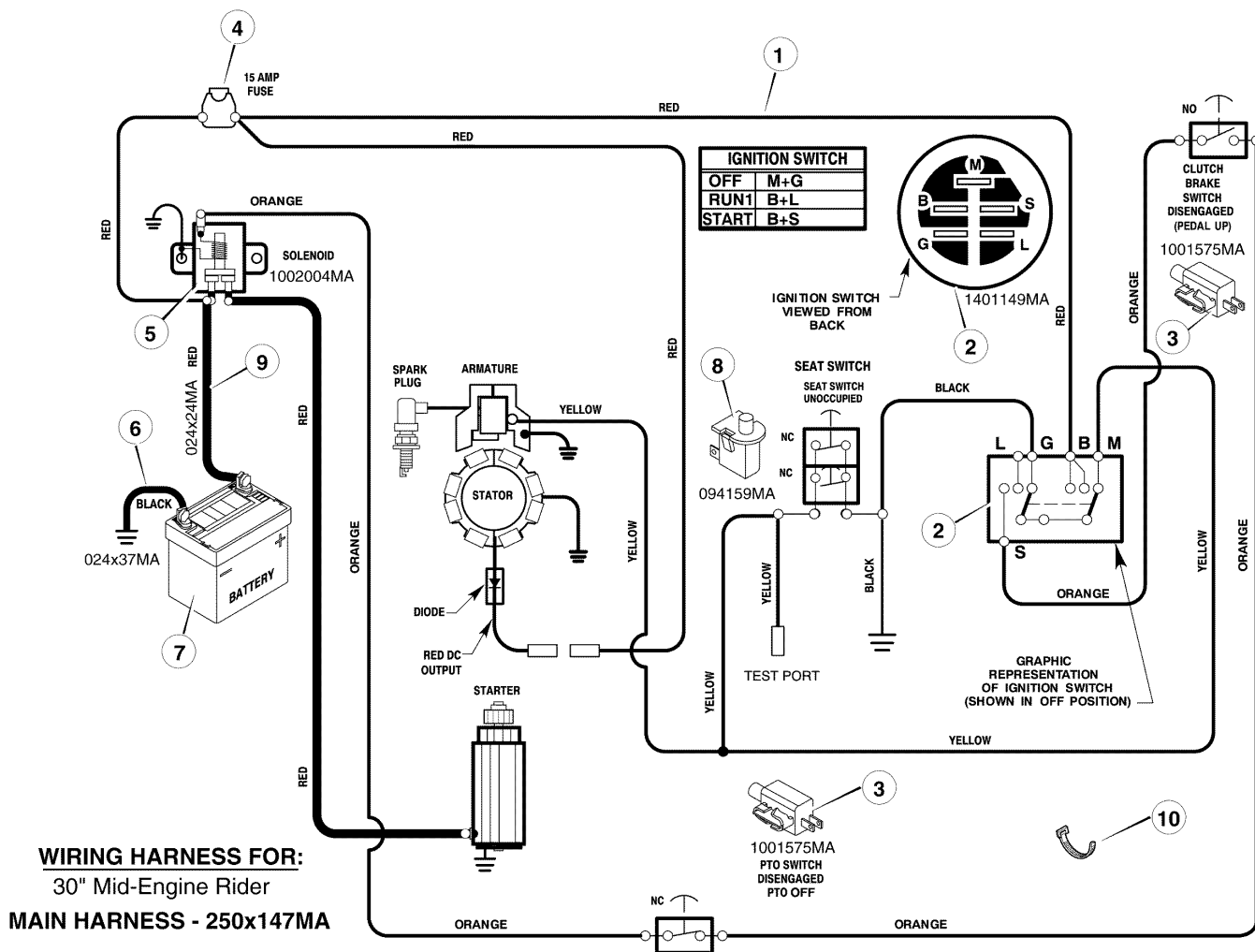
Note** Contact your nearest Peerless transaxle dealer for parts and service.

The above parts group applies to the following Mfg. Nos.:

7800336 - 309007x51A

Electrical System

NOTE: Unless noted otherwise, use the standard hardware torque specification chart.



The above parts group applies to the following Mfg. Nos.:
7800336 - 309007x51A

Electrical System

REF NO	PART NO.	DESCRIPTION
1	250x147MA	HARNESS, Chassis Wire
2	1401149MA	SWITCH, Ignition
--	327349MA	KEY, Ignition
3	1001575MA	SWITCH, Limit
4	054212MA	FUSE
--	407078MA	HOLDER, Fuse
5	1002004MA	SOLENOID
--	26x229MA	SCREW, Mounting
--	15x116MA	LOCKNUT
6	24x37MA	CABLE, Battery Ground
7	1740463MA	BATTERY
--	002x82MA	BOLT, Carriage
--	014x79MA	WINGNUT
8	094159MA	SWITCH, Seat Sensor
9	024x24MA	CABLE, Red Battery
--	690604MA	BOOT, Battery Terminal, Positive
10	032618MA	Strap, Tie

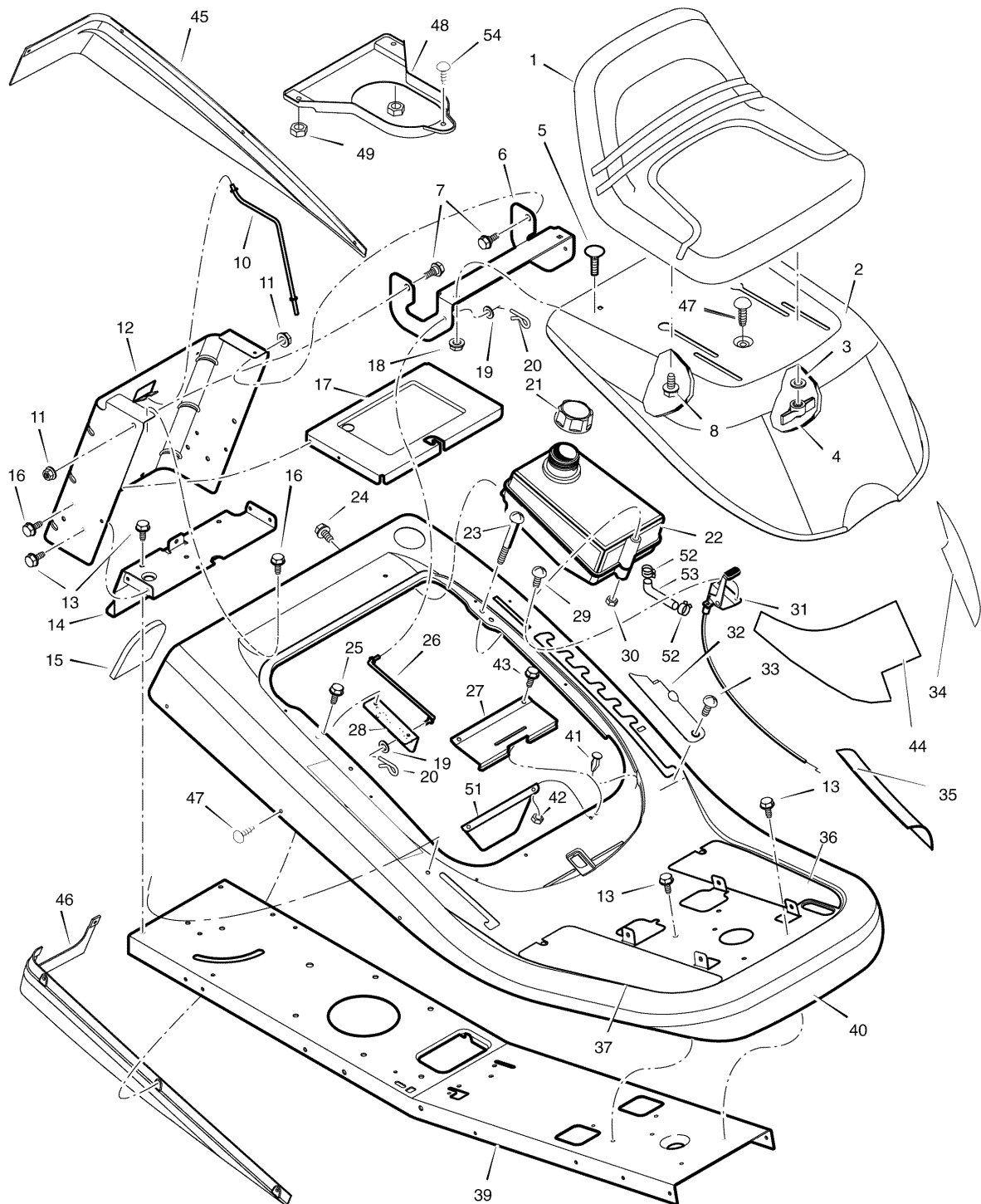
Footnotes

The above parts group applies to the following Mfg. Nos.:

7800336 - 309007x51A

Chassis & Hood

NOTE: Unless noted otherwise,
use the standard hardware torque
specification chart.



The above parts group applies to the following Mfg. Nos.:
7800336 - 309007x51A

Chassis & Hood

REF NO	PART NO.	DESCRIPTION
1	690566MA	SEAT
2	1401379E701MA	HOOD
3	017x47MA	WASHER
4	1001054MA	BOLT, Wing
5	002x16MA	BOLT, Carriage
6	1401378E701MA	BRACKET, Hinge
7	009x29MA	BOLT, Shoulder
8	009x56MA	BOLT, Shoulder
10	1401113MA	ROD, Battery
11	015x84MA	NUT, Flange
12	1401025E701MA	PLATE, Rear
13	26x249MA	SCREW
14	1401050E701MA	PLATE, Hitch
15	1401087MA	COVER
16	26x263MA	SCREW
17	1401076E701MA	TRAY, Battery
18	015x79MA	NUT, Flange
19	017x45MA	WASHER
20	0031x6MA	PIN, Cotter
21	092317MA	CAP, Fuel Tank
22	1401361MA	TANK, Fuel
23	06x111MA	SCREW
24	26x253MA	SCREW
25	26x263MA	SCREW
26	1401110MA	ROD, Hood Prop
27	1401282MA	SPRING, Seat Deck
28	1401297E701MA	BRACKET, Prop Rod
29	26x201MA	SCREW
30	15x116MA	NUT, Nylock
31	1401248MA	CONTROL, Throttle
32	1401214MA	COVER, Detent
33	009x47MA	BOLT, Shoulder
34	1401208MA	HEAT SHIELD, Hood L.H.
35	1401209MA	HEAT SHIELD, Hood Upper
36	1401229MA	FOOTMAT, Left
37	1401228MA	FOOTMAT, Right
39	1401371E701MA	FRAME
40	1401349E701MA	DECK, Seat
41	094744MA	BUMPER
42	15x116MA	NUT
43	0025x2MA	SCREW
44	1401385MA	HEAT SHIELD, Hood R.H.
45	1401075MA	TRIM, Left

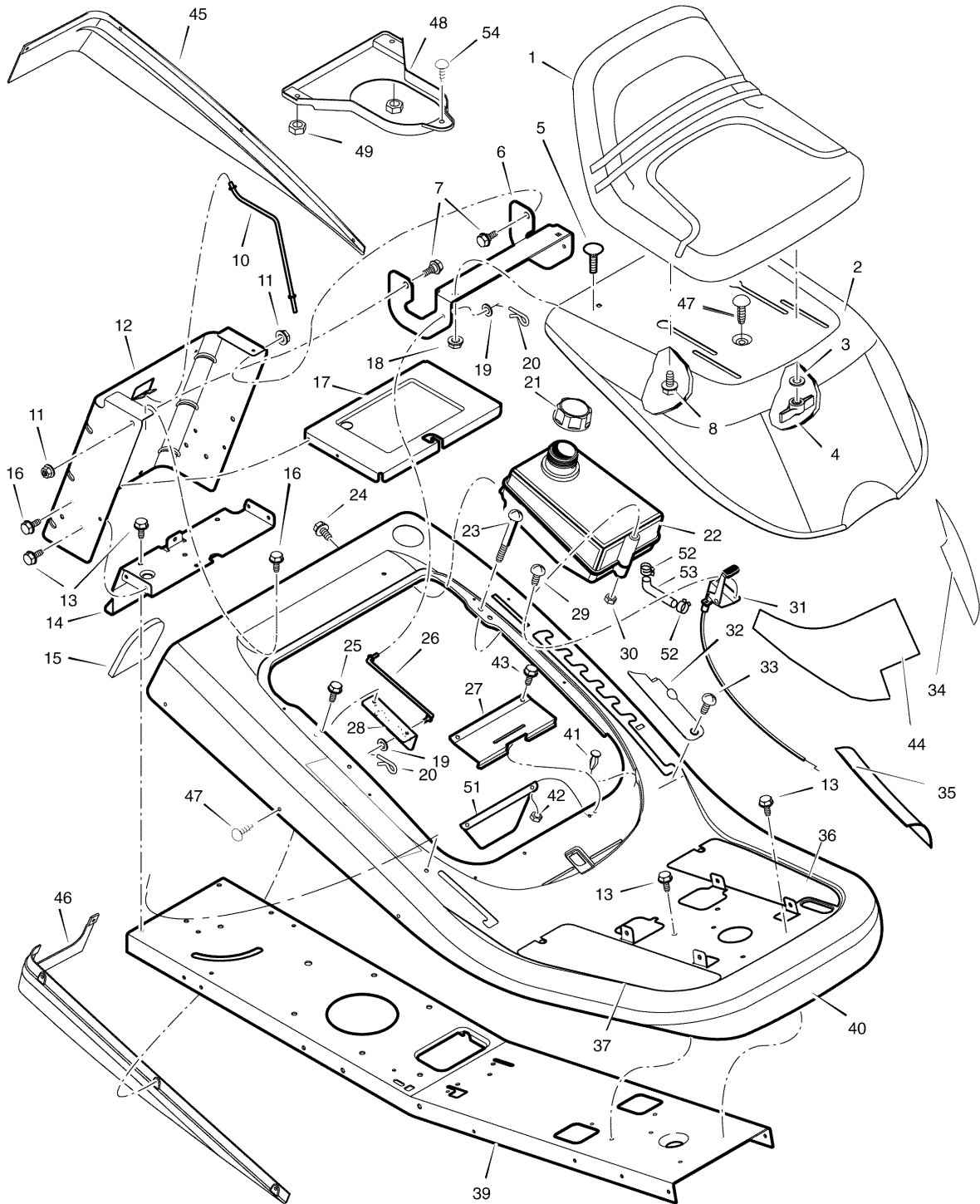
Footnotes

The above parts group applies to the following Mfg. Nos.:

7800336 - 309007x51A

Chassis & Hood

NOTE: Unless noted otherwise,
use the standard hardware torque
specification chart.



The above parts group applies to the following Mfg. Nos.:
7800336 - 309007x51A

Chassis & Hood

REF NO	PART NO.	DESCRIPTION
46	1401074MA	TRIM, Right (Gray)
48	1401380MA	PLENUM
49	15x123MA	NUT, Hex 5/16--18
51	1401401MA	HEAT SHIELD
52	095197MA	CLAMP, Hose
53	1401402MA	LINE, Fuel
54	0193x1MA	FASTENER, Panel
--	1401239MA	PARTS BAG
--	1741751	INSTRUCTION BOOK
--	1741752	MANUAL, Parts List

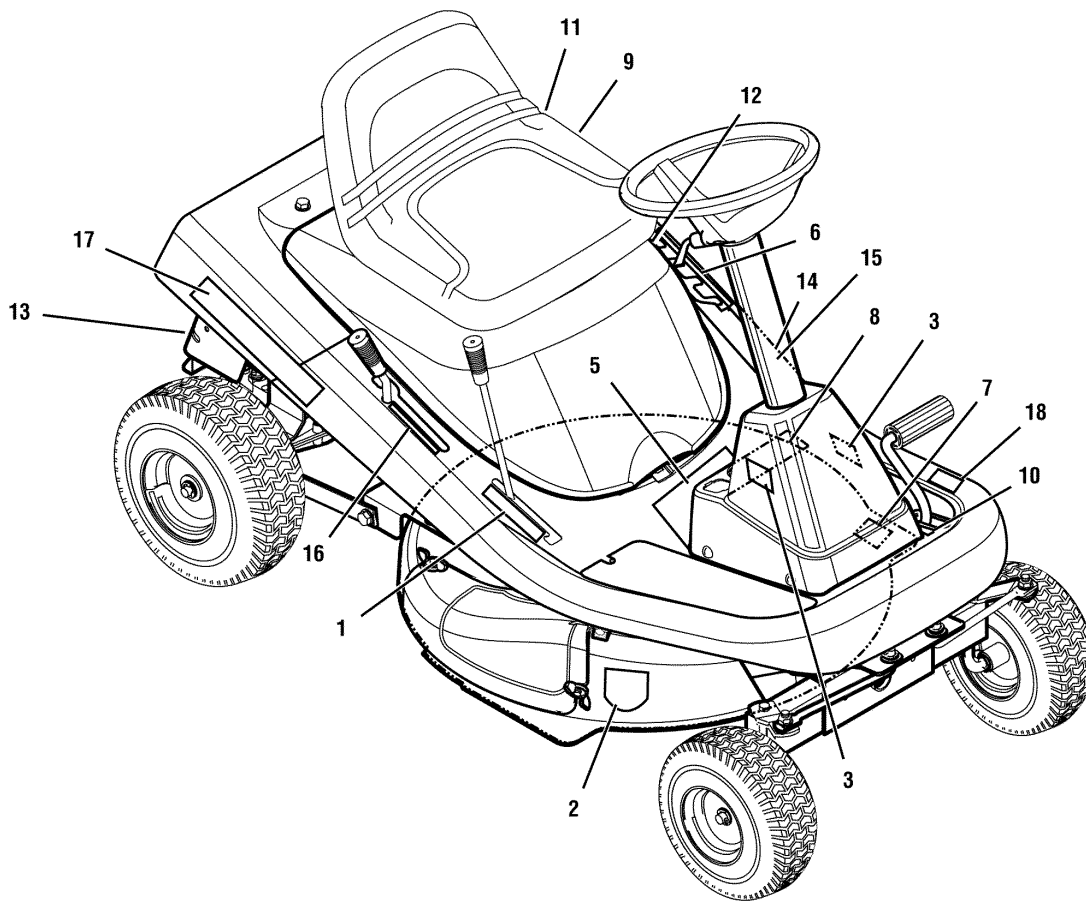
Footnotes

The above parts group applies to the following Mfg. Nos.:

7800336 - 309007x51A

Decals

NOTE: Unless noted otherwise,
use the standard hardware torque
specification chart.



The above parts group applies to the following Mfg. Nos.:
7800336 - 309007x51A

Decals

REF NO	PART NO.	DESCRIPTION
1	48X724MA	DECAL, Engagement
2	48X4033MA	DECAL, Cut Finger Symbols
3	1741803YP	DECAL, 105/76 L.H. & R.H. Auto
5	48X4032MA	DECAL, Warning, Export
6	48X727MA	DECAL, Height Adjust, 6 Positions
7	48X4034MA	DECAL, No Step, Export
8	48X726MA	DECAL, Park Brake Symbol
9	48X728MA	DECAL, Throttle Control
10	48X736MA	DECAL, Clutch/Brake XPT
11	48X729MA	DECAL, Gas Gauge
12	44X5936MA	DECAL, Heat Shield Warning
13	48X511MA	DECAL, Warning Load Limit, Export
14	44X6828MA	DECAL, Warning Pinch Point
15	44X7027MA	DECAL, Deck Level
16	48X5223MA	DECAL, Gear Select, 5 Speed
17	1740552MA	DECAL, Murray L.H & R.H.
18	48X5911MA	DECAL, 100db, Export

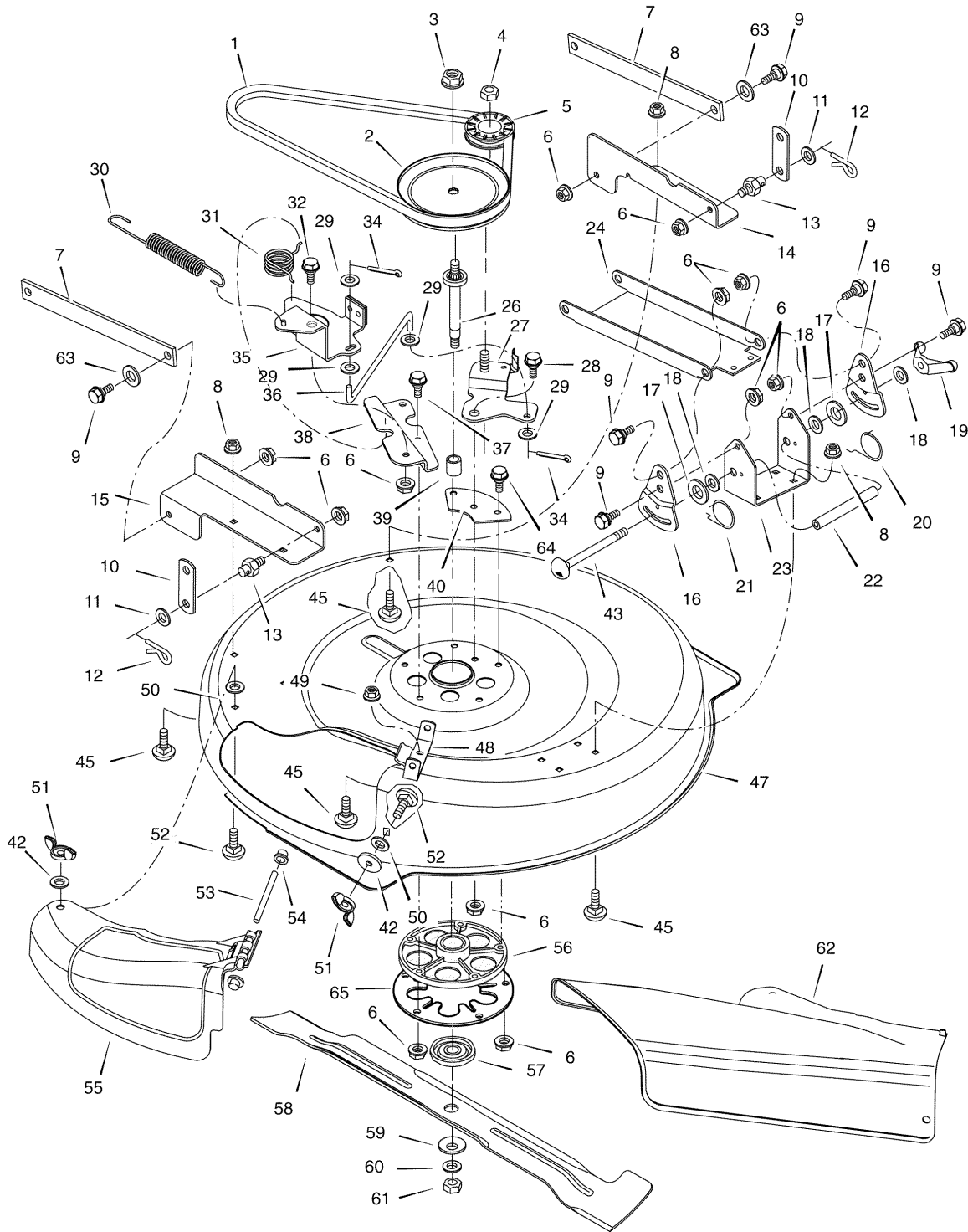
Footnotes

The above parts group applies to the following Mfg. Nos.:

7800336 - 309007x51A

Mower Housing

NOTE: Unless noted otherwise,
use the standard hardware torque
specification chart.



The above parts group applies to the following Mfg. Nos.:
7800336 - 309007x51A

Mower Housing

REF NO	PART NO.	DESCRIPTION
1	37x111MA	BELT, Blade Drive
2	1401092ZMA	PULLEY, Input
3	15x140MA	LOCKNUT
4	015x98MA	NUT, Flange
5	1401252MA	PULLEY, Idler
6	015x84MA	NUT, Flange
7	1401031E701MA	ARM, Rear
8	015x79MA	NUT, Flange
9	009x58MA	BOLT, Shoulder
10	1401033E701MA	LINK, Lift
11	017x45MA	WASHER
12	0031x4MA	PIN, Hair
13	094067MA	PIN, Threaded Shoulder
14	1401047E701MA	BRACKET, Left Rear
15	1401296E701MA	BRACKET, Right Rear
16	1401038E701MA	PLATE, Adjustment
17	094137MA	PAD, Friction
18	017x45MA	WASHER
19	095004MA	WINGNUT
20	166x43MA	SPRING, Left Torsion
21	166x42MA	SPRING, Right Torsion
22	1401095MA	TUBE, Spacer
23	1401037E701MA	BRACKET, Deck
24	1401040E701MA	HANGER, Front
26	1401065MA	SHAFT, Splined
27	1401258E701MA	ARM ASSEMBLY , Idler
28	009x39MA	BOLT, Shoulder
29	017x47MA	WASHER
30	165x157MA	SPRING, Extension
31	166x46MA	SPRING, Torsion
32	009x42MA	BOLT, Shoulder
34	030x20MA	PIN, Cotter
35	1401185E701MA	ARM ASSEMBLY, Brake
36	1401119MA	LINK, Idler Arm
37	025x23MA	BOLT
38	1401052E701MA	BRACKET, Brake Mounting
39	1401094MA	SPACER, Jackshaft
40	1401259ZMA	PLATE, Idler Mounting
42	019x45MA	WASHER
43	002x94MA	BOLT, Carriage
45	002x53MA	BOLT, Carriage
47	1401236E701MA	HOUSING, Blade
48	1401106E701MA	HINGE, Mulching Cover

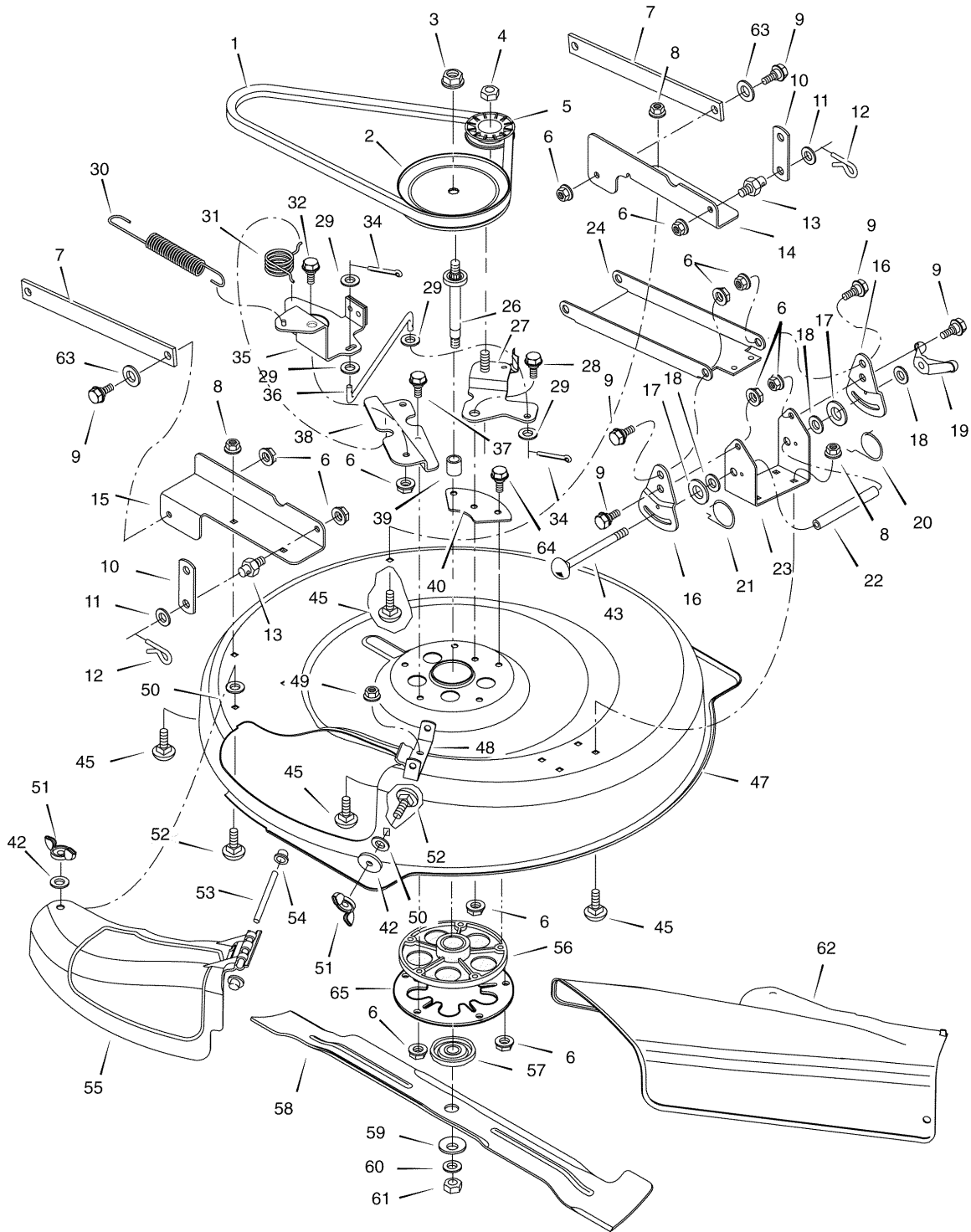
Footnotes

The above parts group applies to the following Mfg. Nos.:

7800336 - 309007x51A

Mower Housing

NOTE: Unless noted otherwise,
use the standard hardware torque
specification chart.



The above parts group applies to the following Mfg. Nos.:
7800336 - 309007x51A

Mower Housing

REF NO	PART NO.	DESCRIPTION
49	015x88MA	NUT, Flange
50	028x76MA	NUT, Speed
51	014x86MA	WINGNUT
52	002x74MA	BOLT, Carriage
53	091767ZMA	ROD, Chute Deflector
54	028x23MA	CAP, Push
55	1401080MA	COVER, Mulch
56	094305MA	MANDREL HOUSING
57	1001035MA	ADAPTER, Blade
58	1401079E701MA	BLADE
59	17x166MA	WASHER, Cup
60	17x165MA	WASHER
61	15x100MA	NUT, Blade Mount
62	1401081MA	DEFLECTOR, Chute
63	017x91MA	WASHER
64	025x23MA	BOLT
65	1001952E701MA	PLATE, Jackshaft Support

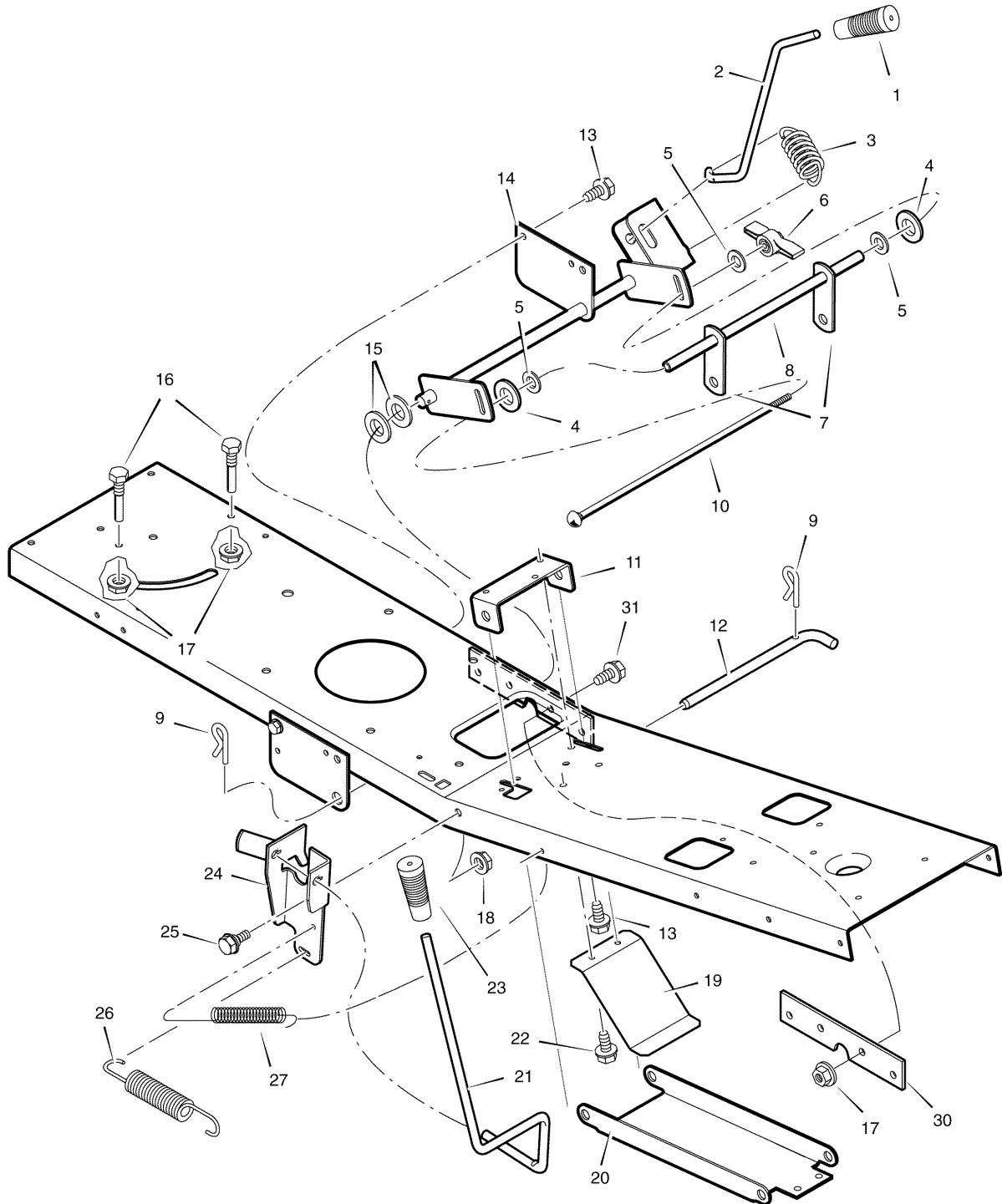
Footnotes

The above parts group applies to the following Mfg. Nos.:

7800336 - 309007x51A

Mower Housing Suspension

NOTE: Unless noted otherwise,
use the standard hardware torque
specification chart.



The above parts group applies to the following Mfg. Nos.:
7800336 - 309007x51A

Mower Housing Suspension

REF NO	PART NO.	DESCRIPTION
1	1741756MA	GRIP, Lift Lever
2	1401117MA	LEVER, Lift
3	165x154MA	SPRING, Extension
4	094137MA	PAD, Friction
5	017x45MA	WASHER
6	095004MA	WINGNUT
7	1401033E701MA	LINK, Lift
8	1401096MA	TUBE, Spacer
9	0031x4MA	PIN, Hair
10	002x93MA	BOLT, Carriage
11	1401030E701MA	BRACKET, Front Hanger Pivot
12	1401118MA	PIN, Front Hanger
13	26x249MA	SCREW
14	1401129E701MA	ARM ASSEMBLY, Lifter
15	17x206MA	WASHER
16	093349MA	SCREW, Guide
17	015x79MA	NUT, Flange
18	015x84MA	NUT, Flange
19	1401147MA	SPRING, Leaf
20	1401040E701MA	HANGER, Front
21	1401116MA	LEVER, PTO
22	26x229MA	SCREW
23	1741757MA	GRIP, PTO
24	1401369E701MA	BRACKET, PTO
25	009x42MA	BOLT, Shoulder
26	165x157MA	SPRING, Extension
27	165x92MA	SPRING, Extension
30	1401260E701MA	PLATE, Reinforcement
31	26x267MA	SCREW

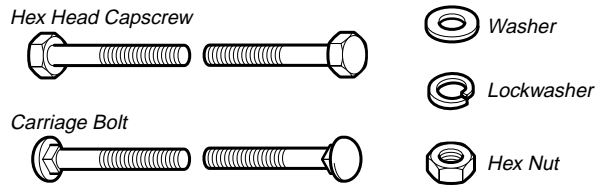
Footnotes

The above parts group applies to the following Mfg. Nos.:

7800336 - 309007x51A

Hardware Identification & Torque Specifications

Common Hardware Types

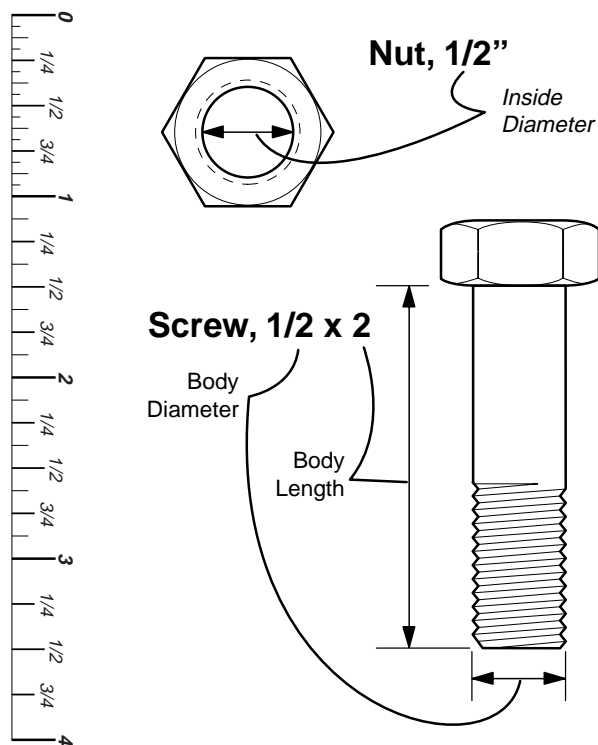


Standard Hardware Sizing

When a washer or nut is identified as 1/2", this is the *Nominal size*, meaning the *inside diameter* is 1/2 inch; if a second number is present it represents the *threads per inch*

When bolt or capscrew is identified as 1/2 - 16 x 2", this means the *Nominal size*, or *body diameter* is 1/2 inch; the second number represents the *threads per inch* (16 in this example, and the final number is the *body length* of the bolt or screw (in this example 2 inches long).

The guides and ruler furnished below are designed to help you select the appropriate hardware and tools.



Torque Specification Chart

FOR STANDARD MACHINE HARDWARE (Tolerance $\pm 20\%$)

Hardware Grade	No Marks SAE Grade 2		SAE Grade 5		SAE Grade 8	
	in/lbs ft/lbs	Nm.	in/lbs ft/lbs	Nm.	in/lbs ft/lbs	Nm.
8-32	19	2.1	30	3.4	41	4.6
8-36	20	2.3	31	3.5	43	4.9
10-24	27	3.1	43	4.9	60	6.8
10-32	31	3.5	49	5.5	68	7.7
1/4-20	66	7.6	8	10.9	12	16.3
1/4-28	76	8.6	10	13.6	14	19.0
5/16-18	11	15.0	17	23.1	25	34.0
5/16-24	12	16.3	19	25.8	27	34.0
3/8-16	20	27.2	30	40.8	45	61.2
3/8-24	23	31.3	35	47.6	50	68.0
7/16-14	30	40.8	50	68.0	70	95.2
7/16-20	35	47.6	55	74.8	80	108.8
1/2-13	50	68.0	75	102.0	110	149.6
1/2-20	55	74.8	90	122.4	120	163.2
9/16-12	65	88.4	110	149.6	150	204.0
9/16-18	75	102.0	120	163.2	170	231.2
5/8-11	90	122.4	150	204.0	220	299.2
5/8-18	100	136	180	244.8	240	326.4
3/4-10	160	217.6	260	353.6	386	525.0
3/4-16	180	244.8	300	408.0	420	571.2
7/8-9	140	190.4	400	544.0	600	816.0
7/8-14	155	210.8	440	598.4	660	897.6
1-8	220	299.2	580	788.8	900	1,244.0
1-12	240	326.4	640	870.4	1,000	1,360.0

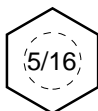
NOTES

- These torque values are to be used for all hardware excluding: locknuts, self-tapping screws, thread forming screws, sheet metal screws and socket head setscrews.
- Recommended seating torque values for locknuts:
 - for prevailing torque locknuts - use 65% of grade 5 torques.
 - for flange whizlock nuts and screws - use 135% of grade 5 torques.
- Unless otherwise noted on assembly drawings, all torque values must meet this specification.

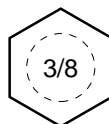
Wrench & Fastener Size Guide



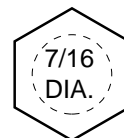
1/4" Bolt or Nut
Wrench—7/16"



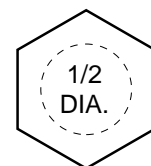
5/16" Bolt or Nut
Wrench—1/2"



3/8" Bolt or Nut
Wrench—9/16"



7/16" Bolt or Nut
Wrench (Bolt)—5/8"
Wrench (Nut)—11/16"



1/2" Bolt or Nut
Wrench—3/4"

