

# Masport®

## EUROPEAN C E ROTARY MOWERS

### SERIES-18, 300ST - OPC

Part Number	583785	300ST	B&S Classic 35
	579805	300ST	B&S XTS 50
Also	573905	300ST	B&S 450 Series



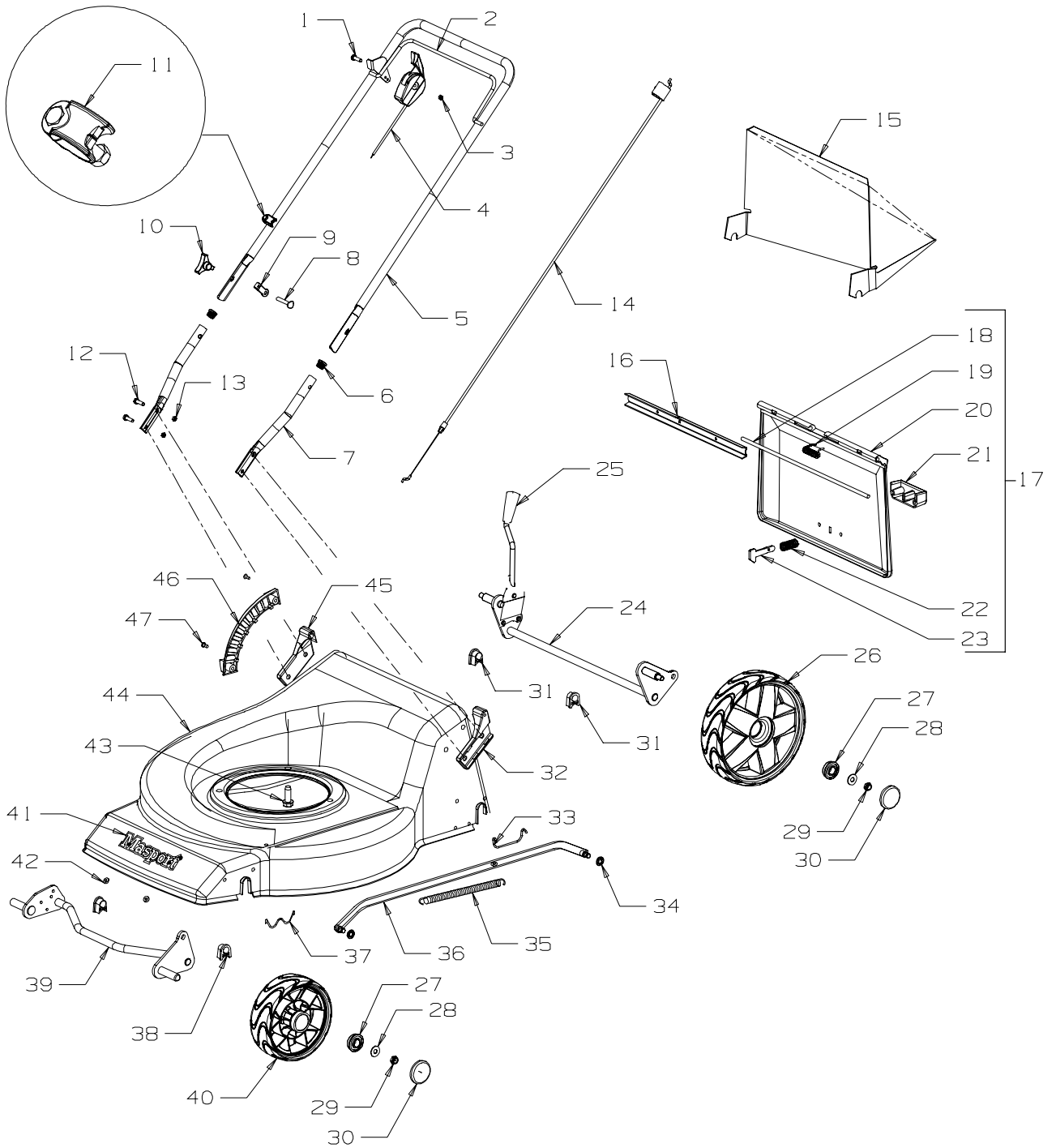
*The Illustrated unit does not necessarily fully represent specific mower model*



Series 18 - 300ST  
Powered By: Briggs & Stratton Classic  
or : Briggs & Stratton XTS 50  
or : Briggs & Stratton 450 Series

# Masport

Series 18 - 350ST



When ordering PLEASE QUOTE PART NUMBER & Description, NOT Illustration No.  
Determine right or left hand side from standing in operating position (standing at handle)



Series 18 - 300ST  
 Powered By: Briggs & Stratton Classic  
 or : Briggs & Stratton XTS 50  
 or : Briggs & Stratton 450 Series

# Masport

Series 18 - 350ST

Item No	Part No	Description	Qty	Item No	Part No	Description	Qty
1	503604	Screw, Pan M6 x 45	1	31	580668	Bush-Pivot, Rear Axle	2
2	583034	Bail-Handle, Flat	1	32	980666	Bracket-Flap, LH	1
or	981740	Bail-Handle, Upturned	1	33	580225	Retainer-clip, Rear axle	2
3	501764	Nut, Nyloc M6	3	34	501365	Clip-Starlock, 5/16"	2
4	583458	Control-Throttle, +Ve N/Ch	1	35	581463	Spring-Counter Balance	1
5	983033	Upper-Handle, Flat - Black	1	36	580404	Rod Assy-Connecting, 150mm	1
or	781265	Upper-Handle, Upturned - Bk.	1	37	529674	Retainer-Clip "W", Front axle	2
6	503319	Plug-Plastic, 22mm - Black	2	38	580030	Bush-Pivot, Front Axle	2
7	980692	Handle-Lower, "Stub" - Black	2	39	583590	Axle-Front, 150mm	1
8	574218	Bolt, SPH M8 x 53 x 35	2	40	579195	<b>Wheel Assy-Front 150mm</b>	2
9	581527	Retainer-Control Cable, Handle	1	(27)	551212	• Bearing-Wheel (2 per Wheel)	4
10	783272	Knob-Plastic M8 assm	2	(28)	501606	Washer, Flat 8 x 19 x 1.6	4
11	782546	Kit - Comfort Start	1	(29)	503831	Nut-Nyloc M8	4
12	501598	Screw, Set M8 x 25	4	(30)	579198	Hub Cap-Button	4
13	501793	Nut, Nyloc M8, Hex ZP	4	41	581240	Nameplate. "Masport"	1
14	581656	Cable-Engine - OPC, Push On	1	42	503150	Clip-Starlock, 5 Dia	1
15	980694	Grass Defector (Optional)	1	43	580453	Screw, Motor S/T 3/ 8" x 1 1/8"	3
16	583151	Dust Seal, Flap-plastic	1	44	779378	Housing - Silver	1
17	782200	<b>Flap Assy-Rear, Plastic</b>	1	45	980667	Bracket-Flap, RH	1
18	581743	• Wire-6mm x 352mm, Flap Pivot	1	46	580025	Quadrant-Height Selector	1
19	581349	• Spring-Flap	1	47	503660	Rivet-Pop 4.7 Dia x 9.0	2
20	581517	• Flap-Plastic - Black	1				
21	580602	• Handle-Flap	1				
22	581106	• Spring-Latch, Flap	1				
23	981650	• Latch-Flap, Barbed	1		583154	Owners Manual	1
24	583591	<b>Axle Assy-Rear, Complete</b>	1		503054	Tie-Nylon Cable	2
25	580056	• Grip, Height-Lever	1		580778	Stop-Rope - Comfort Start	1
26	579197	<b>Wheel Assy-Rear 200mm</b>	2				
27	551212	• Bearing-Wheel (2 per Wheel)	4		582444	Decal-Flap	1
28	501606	Washer, Flat 8 x 19 x 1.6	4		582445	Decal-Housing	1
29	503831	Nut-Nyloc M8	4		582446	Decal-Front	1
30	579198	Hub Cap-Button	4				

**Bold Text** = Assemblies  
**Bulleted Text** = Items included in Assemblies

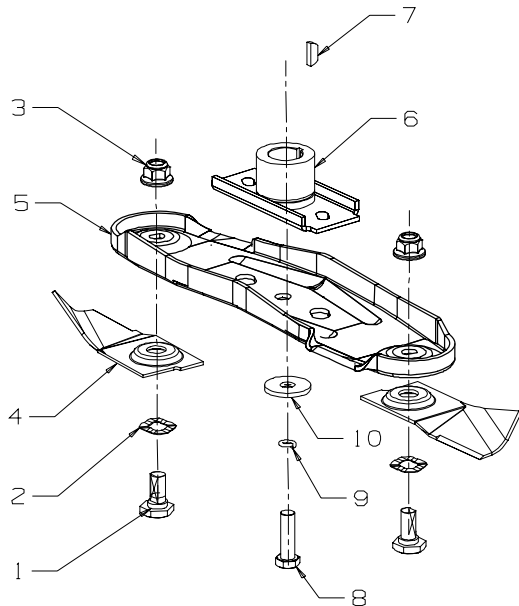


Series 18 - 300ST  
 Powered By: Briggs & Stratton Classic  
 or : Briggs & Stratton XTS 50  
 or : Briggs & Stratton 450 Series

# Masport

Series 18 - 350ST

## 460mm Quick Cut Blade Assembly - Part Number 981364

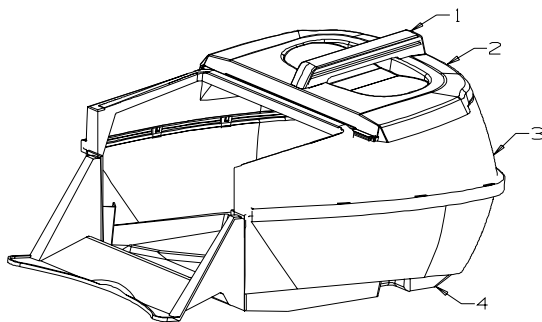


Item No	Part No	Description	Qty
1	581707	• Bolt-Blade	2
2	580693	• Washer, Wavy 13.4x24.2x.51	2
3	583049	• Blade, QuickCut - 460mm	2
4	503672	• Nut, Flange Nyloc M10	2
5	580653	Carrier-Blade	1
6	582392	Driver Assy-Blade - 22mm Shaft	1
(6a)	531640	Driver Assy-Blade - 25mm Shaft	1
7	500636	Key, Woodruff - 5/8" x 5/32" x 1/4"	1
(7a)	503363	Key, Woodruff - 5/8" x 3/16" x 1/4"	1
8	581610	Screw, Set NF 3/8" x 1.25	1
9	500204	Washer, Spring 3/8"	1
10	503855	Washer, Flat 9.75 x 30 x 4	1
<b>981364</b>		<b>Blade Assm - 460mm (No Driver)</b>	
<b>583049</b>		<b>Blade &amp; Bolt Pack (incl. items 1 to 4)</b>	
<b>580133</b>		<b>Bolt Pack (incl. items 1, 2 &amp; 4)</b>	

**PARTS 6a & 7a - used with B&S XTS 50 Motor**

**Bold Text** = Assemblies  
**Bulleted Text** = Items included in Assemblies

## Catcher Assembly Complete, Plastic - Part Number 980670



Item No	Part No	Description	Qty
1	580673	Handle-Catcher	1
2	580674	Lid-Catcher	1
3	580671	Top-Catcher	1
4	583295	Bottom-Catcher	1

### MASPORT HEAD OFFICE - NEW ZEALAND

P.O. Box 14-349  
 Panmure, Auckland 1741,  
 New Zealand  
 Phone: (64 9) 571 1200  
 Fax: (64 9) 571 5864  
 Website : [www.masport.com](http://www.masport.com)  
 Email : [sales@masport.co.nz](mailto:sales@masport.co.nz)